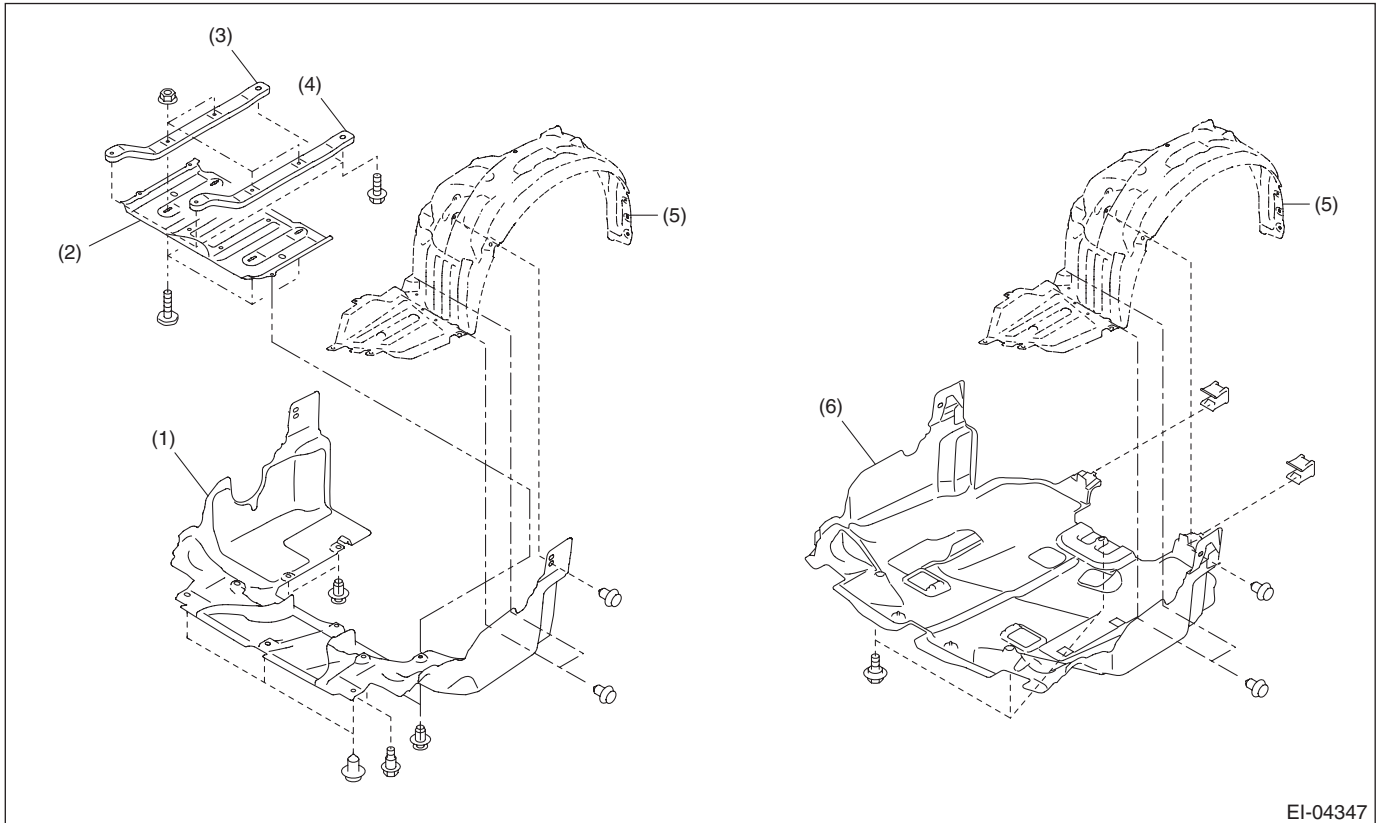


2. Front Under Cover

A: REMOVAL

- 1) Lift up the vehicle.
- 2) Remove the bolts and clips, and remove the under cover - front.



(1) Under cover - front (except for STI model)

(2) Frame - under cover (except for STI model)

(3) Plate - CTR RH (except for STI model)

(4) Plate - CTR LH (except for STI model)

(5) Mud guard - front

(6) Under cover - front (STI model)

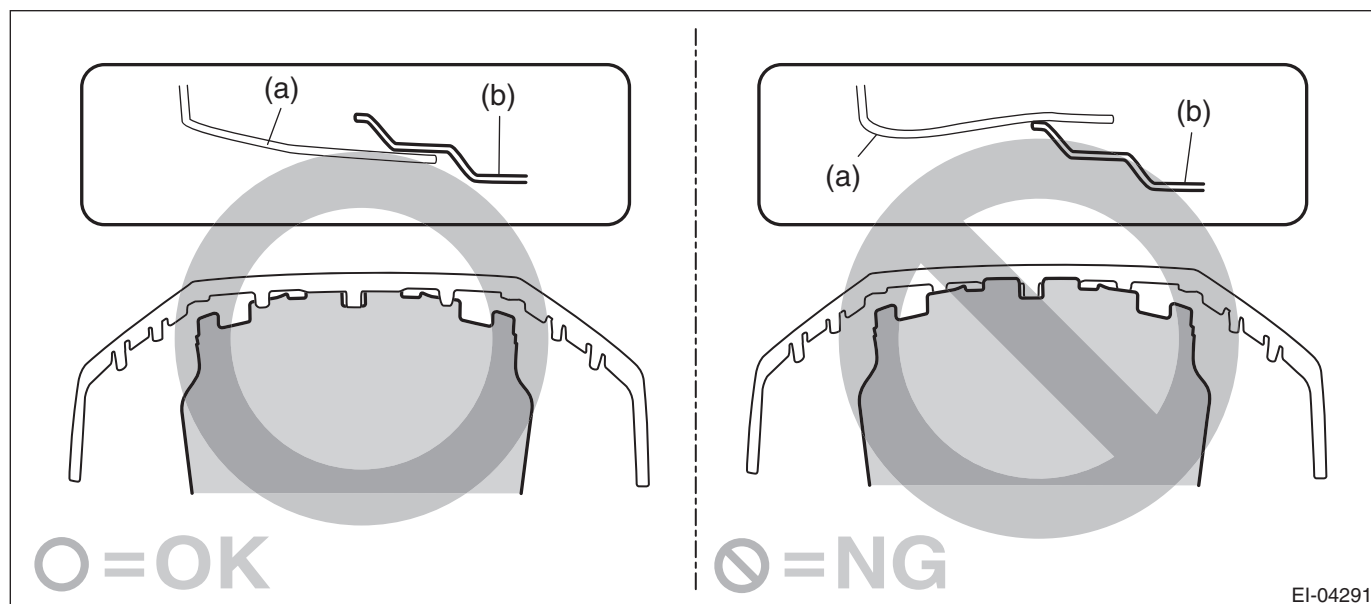
Front Under Cover

EXTERIOR/INTERIOR TRIM

B: INSTALLATION

CAUTION:

Install the under cover so that the under cover front end (b) comes inside of the bumper face - front (a).



1) Install the under cover - front.

Tightening torque:

Refer to "COMPONENT" of "General Description". <Ref. to EI-3, FRONT UNDER COVER, COMPONENT, General Description.>

2) Lower the vehicle.